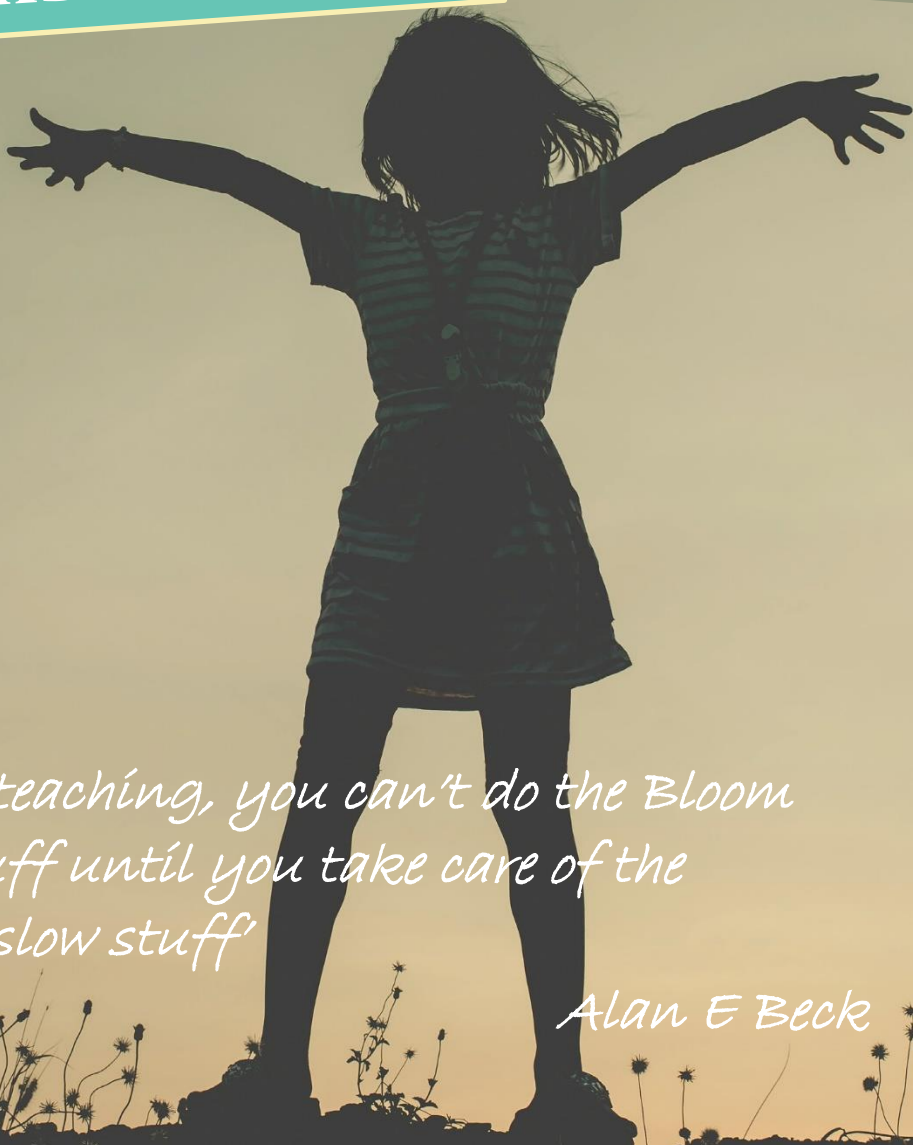




KD Safeguarding

Keeping children safe

**Training and
consultancy**



*'In teaching, you can't do the Bloom
stuff until you take care of the
Maslow stuff'*

Alan E Beck

What we do...



We offer a wide range of **safeguarding training** and **consultancy services** to schools and organisations working with children and young people. Our experienced team can also work alongside you to provide **direct work** with children and families.

KD Safeguarding have supported practitioners and professionals for over 5 years. Our clients include, schools and academies, teaching alliances, children's residential homes, local authorities and organisations within the voluntary and private sector.

Receiving excellent feedback from delegates, our **safeguarding training** is engaging, motivational and most importantly, underpinned by the latest research and good practice guidance. Tailored to their role and context, we provide participants with the skills and knowledge they need.

Building capacity and sharing our knowledge and understanding is at the forefront of what we do. Our safeguarding health check, focus visits and safeguarding supervision are just some examples of how our **consultancy services** can provide schools and organisations with the advice and guidance they need to feel confident in their safeguarding policy and practice.

Working alongside you or as a central part of your team, education welfare, early help, complex safeguarding and family support through to AIM Assessments and life story work are just some examples of our **direct work** with children and families.

Our values

We are passionate about **placing children at the heart** of everything we do, and open, honest and trusting relationships are our foundation. We know that one of the biggest protective factors for children, is to be surrounded by emotionally available adults who care. It is this, that shapes our service. We want to do everything we can to support children to be cared for, to be heard and understood and we want to support the adults around them to do that too. We value difference and we work in creative and flexible ways to support and meet the unique and individual needs of the people we work with.

Even when the going gets tough, we never forget the privileged position we are in. We have the opportunity to work alongside the most amazing and inspiring children, families and professionals. Knowing this drives us to be the best that we can be, to give you the support you need, to make the difference children deserve.

We want to thank you for everything you do and for giving us the opportunity to be a part of it.



Safeguarding consultancy and support

Safeguarding health check

Our safeguarding health check will leave you with peace of mind that safeguarding arrangements are compliant and up to date with the latest statutory guidance and Ofsted requirements. Most importantly, you will be confident that your safeguarding arrangements are effective and will help to protect children and reduce risk.

The safeguarding health check will be facilitated by an experienced consultant and includes a safeguarding learning walk; focus discussions with children and key stakeholders; review of safeguarding policy, practice and record keeping; leadership and governance; evidence of safer recruitment and safer working practice. You will receive a written report that identifies strengths and recommendations. Trust level safeguarding health checks are also available.

If you prefer a more bespoke package of support, we can facilitate a lessons learned review, or a focused visit on a specific aspect of safeguarding such as child on child abuse, online safety or your single central record. Please speak to us about your individual requirements.

Safeguarding supervision

Individual (minimum one hour) and group supervision (minimum two hours) are available. Using a reflective practice model, participants are invited to discuss a child or safeguarding issue. Supervision offers a safe space to understand and manage risk; maintain child centred and outcome focused approaches; explore the emotional impact of child protection work and develop strategies to support emotional wellbeing.

Supervision is conducted with an experienced safeguarding specialist and offered on a half-termly basis, or more frequently where required. A signed agreement addresses confidentiality issues. A record of key discussion and agreed action points are shared securely.

AIM Assessment - Harmful sexual behaviours

Our certified AIM assessor and experienced social worker will support the assessment of sexual behaviours to inform professional decision making and a shared understanding of concern between agencies. The process creates an understanding of risk, assists pattern mapping and safety planning whilst keeping children at the heart of decision making.

Working with children and families

If you want to increase capacity and expertise within your safeguarding team, either on a short or longer-term basis, we have qualified and experienced social workers and family support at hand. We can work alongside you or as part of your team to offer a faster response to issues and concerns. We can co-ordinate and lead on early help, life story work, tailored support through to complex safeguarding and multi-agency working.



Attendance consultancy and support

We know that good school attendance can help to reduce the risk of abuse and exploitation. Absence from school is often an early indicator of underlying issues, securing regular attendance can be the first step to raising achievement, increasing life chances and a successful future.



Our highly skilled Education Welfare Officers are specialists in their field and have vast experience of working in education settings to improve attendance and reduce occasional and persistent absence. We understand that the needs of each school vary and we can offer a bespoke package of support.

Attendance health check

An effective starting point for improving whole school attendance and reducing persistent absence. The health check includes a review of your data analysis, policies, processes and range of interventions. The health check also includes inspection of school registers to ensure absence is recorded effectively and in line with legal requirements. We will provide you with a full written report that will highlight good practice and areas for development.

Education Welfare

Working with you to identify children and families who may require additional support to remove barriers to education and improve attendance. Our Officers are experienced in using a range of strategies, including home visits, family support work, leading and co-ordinating early help and attendance panels. We can also support you to develop and embed a whole school approach to drive improvement or where appropriate, to prepare evidence and documentation for legal interventions.



Safeguarding training

Safeguarding children training

Our whole school or service safeguarding training reflects the latest statutory guidance and will provide all staff working within your organisation, with the most up to date safeguarding information.

Safeguarding training is available for all professionals working with children and can be arranged as either a four-hour training session or across two, two-hour extended twilights. You can also opt for a full day to include a focus on a specific safeguarding issue.

The training covers the following areas:

- Signs and indicators of abuse and neglect
- Safeguarding vulnerable children
- The continuum of need
- Contextual safeguarding issues
- Learning from serious case reviews
- Overview of statutory guidance
- Child protection procedures - What to do if you're worried about a child
- Responding to disclosures, record keeping and information sharing
- Safer working practices and whistleblowing

Governor training

This training will provide governors with the latest statutory requirements and Ofsted expectations. Governors will feel confident about their role and will leave with practical ideas about how to robustly monitor the implementation of effective safeguarding arrangements in their school or setting.

*Each one of us can make a difference,
together we can make a change*

Specific safeguarding training and briefings

Available on a range of specific safeguarding issues, our briefings are designed to upskill all professionals working with children. The duration of sessions can vary and will depend on the area, and level of depth you wish to cover. As always, we will work with you to ensure our training offer meets the needs of your staff team and context.

Areas covered include:

- Single central record
- Record keeping
- Responding to disclosures
- Voice of the child
- Online safety and sharing nudes and semi-nude images (sexting)
- Preventing radicalisation and extremism
- Female genital mutilation
- Forced marriage and so-called honour-based violence
- Child sexual exploitation
- Domestic abuse
- Working with parents and carers
- Safer working practices
- Safeguarding children with SEND
- Child on child abuse
- Harmful sexual behaviours
- County lines and criminal exploitation
- Knife crime
- Introduction to ACEs and trauma informed practice
- KCSiE and annual safeguarding updates

*Can't see what you're looking for?
Just ask...*

Advanced safeguarding training

Venue based training

Our advanced safeguarding courses are available throughout the year and held at venues across the Northwest. Visit our website for more details.

Designated safeguarding lead training

Meeting the formal training requirements for designated safeguarding leads and will provide an overview of the current statutory guidance and Ofsted expectations. Delegates will have the opportunity to explore some of the more specific safeguarding issues and how to develop a strategic and proactive approach to safeguarding children.

Leaving with practical ideas about how to implement and secure effective safeguarding arrangements in their school, including:

- A good understanding of their own role, and the processes, procedures and responsibilities of other agencies.
- Understanding and assessing risk using approaches such as signs of safety and contextual safeguarding.
- Engaging with children and families and contributing to multi-agency working.
- Effective information sharing and record keeping systems.
- Safeguarding vulnerable children and children with SEND.
- Creating a culture of listening.
- Using data to inform a strategic and proactive approach.
- Responding to specific needs and harms and understanding the impact of trauma and abuse.
- Applying the thematic learning from research and safeguarding practice reviews.
- Creating a safe culture.

Supervision skills

The course is aimed at Headteachers and or Designated Safeguarding Leads who want to develop their supervision skills to support their wider safeguarding team. Delegates will explore models of supervision that promote safe practice and consider the importance of creating a safe space to:

- Strengthen effective safeguarding practice that is child-centred, and outcome focused.
- Support reflective practice that promotes personal and professional development.
- Manage the emotional impact of child protection work with children and families.
- Manage risk using the signs of safety model.





Safer recruitment training

This one-day course accredited by the Safer Recruitment Consortium, gives those recruiting in an education setting, the information and knowledge of how to recruit safely and comply with the statutory guidance.

This course will focus on safer recruitment and the wider context of safeguarding, including:

- Prevalence of abuse and profile of abusers.
- Features of and how to plan a safer recruitment process.
- Making the right decisions.
- Setting acceptable standards of behaviour and maintaining an ongoing culture of vigilance.

Single central record training

Further emphasising the importance of safer recruitment, this course will support participants to understand how to complete and evidence the different pre-employment checks through the effective maintenance and quality assurance of the single central record. This half day course will support schools to ensure they are fully compliant with statutory requirements and will include:

- Overview of all pre-required checks and evidence required for all roles.
- Example single central record and supporting templates.
- Safer recruitment file and required evidence of pre-employment checks
- Quality assurance of the single central record.

When a flower doesn't bloom, you fix the environment in which it grows

Working with families

This two-day course is designed to support practitioners to confidently undertake effective direct work with parents and children within a safeguarding context. Informed by thematic learning from safeguarding practice reviews, this course will incorporate relational and strength-based approaches to working with families. Course content will include:

- Building and maintaining relationships with parents to support them to understand and meet the needs of their children.
- Reflect on factors that influence parenting and the parent-child relationship.
- Understand attachment and the impact of adverse childhood experiences.
- Acting with professional curiosity and holding difficult conversations.
- Using motivational interviewing techniques to support and motivate lasting change within families.
- Understanding risk, assessing need, and supporting families to access early help and specialist services.
- Developing practice to meaningfully capture the voice of the child.
- Responding to disclosures in line with achieving best evidence principles and child centred approaches.
- Practical tools and resources to facilitate direct work with children and parents.
- Developing inclusive practice to overcome barriers to supporting families.
- Effective record keeping skills.
- Developing safe and effective practice when home visiting and lone working.

Supporting children who are looked after and previously looked after



This course is designed to equip designated teachers with the knowledge and understanding needed to support Looked After and Previously Looked After Children and will focus on the following areas:

- The statutory duties of the designated teacher for both looked after and previously looked after children.
- Creating a whole school culture of high expectations and where children's personal, emotional, and academic needs are understood and prioritised.
- Developing practice to meaningfully capture the voice of the child.
- Understanding the role of the Virtual School Head and Virtual School.
- Understanding your role within a multi-agency context and working together with other professionals to achieve improved outcomes for children.
- Supporting staff in mitigating the impact of loss and separation (understanding attachment), past abuse and trauma.
- Developing effective Personal Education Plans and understanding the importance of these in the wider care planning.
- Pupil Premium Plus Grant and how it may be used.
- Developing policy and practice to support admission, good attendance and avoid exclusions.
- Measuring the impact and reporting outcomes.

AIM training: A whole school approach to sexual violence and sexual harassment in schools

Offered in partnership with The AIM Project, this course offers support in navigating the sensitive and emotive subject of child-on-child sexual violence and harassment in schools and colleges, meeting the legislative and government requirements, such as Part 5 of the statutory guidance Keeping Children Safe in Education, while keeping the needs of the children at the centre of the decision making.

The course aims to:

- To provide information from research and practice about why children and young people display these behaviours.
- To provide an opportunity for schools to reflect on current policies and practice.
- To provide information of the legal roles and responsibilities of education staff in the context of children and young people exhibiting harmful sexual behaviour.
- To provide a template for a risk assessment and management plan (RAMP) within the education setting.
- To consider specific management issues in education, such as supervision, exclusions, supporting children subjected to sexual harm, dealing with internet / social media etc.
- To consider specific management issues in education, such as supervision, exclusions, supporting children subjected to sexual harm, dealing with internet/social media etc.
- To look at appropriate individual work in education settings and help children and young people move.

*'Wheresoever you go, go with
all your heart'*

Confucius



Keeping children safe